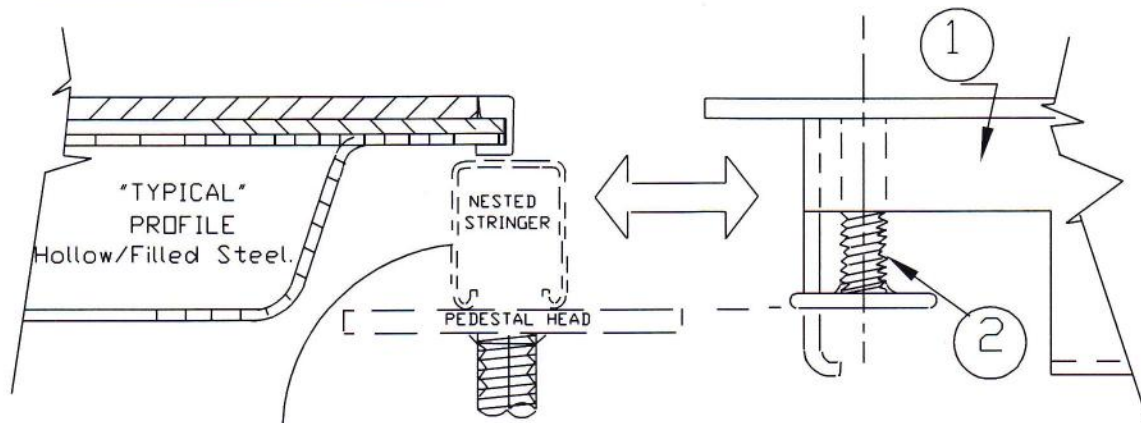


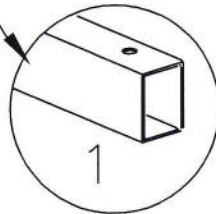
"APPLICATION GUIDE" (INFINITY 55 SERIES / 53 SERIES)



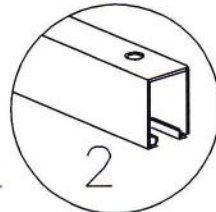
Infinity Parts List (choose 1 or 2)

- ① Infinity Grate (P/N: ISG55-15)
Leveling Leg (P/N: CLX)
- ② Infinity Grate (P/N: ISG53-15)
Leveling Leg (P/N: CLX)

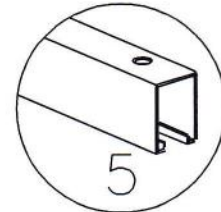
MFR. Tate/#2989
Stringer dims, 22.15/16" L
5/8" W
1.1/8" H
Hole Ctrs, 21.3/4"
Stringer Type: Bolt on.



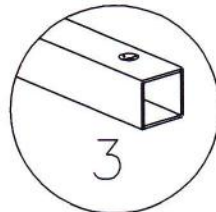
MFR: IAR/Atlantic
Stringer dims, 23" L
13/16" W
1.1/4" H
Hole Ctrs, 21.3/4"
Stringer Type: Heavy Duty Bolt on.



MFR. Tate
Stringer dims, 23" L
13/16" W
1.1/4" H
Hole Ctrs, 22"
Stringer Type: Bolt on.



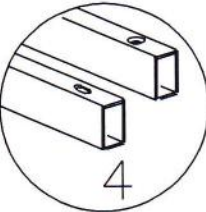
MFR: Unknown
Stringer dims, 22.7/8" L
1" W
1" H
Hole Ctrs, 22"
Stringer Type: Bolt on.



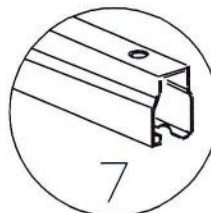
MFR. Severn
Stringer dims, 23.1/16" L
13/16" W
1.1/16" H
Hole Ctrs, 22.1/2"
Stringer Type: Drop on.



MFR: ASM Modular Systems.
Stringer dims, 22.15/16" L
13/16" W
1.1/4" H
Hole Ctrs, 22"
Stringer Type: Bolt on.



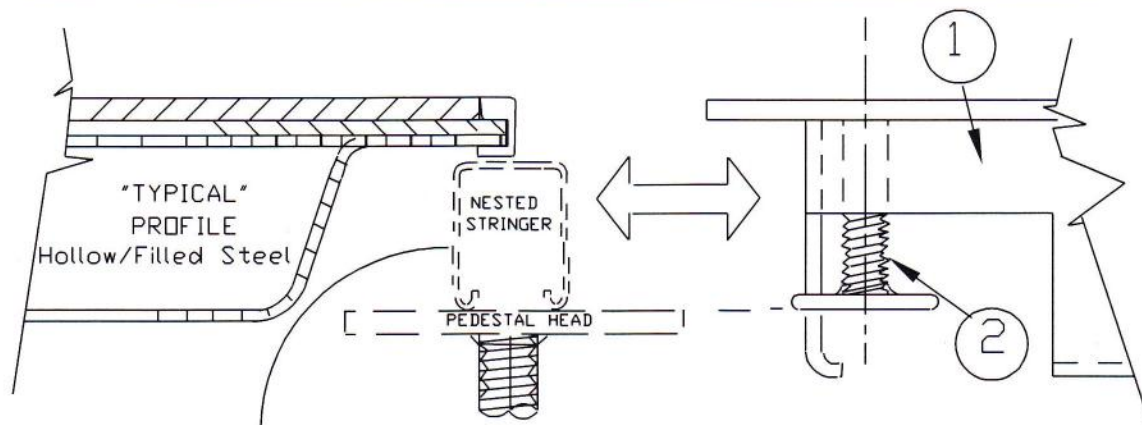
MFR. Donn Bolted
Stringer dims, 23.1/16" L
13/16" W
1.1/16" H
Hole Ctrs, 22"
Stringer Type: Bolt on.



USE INFINITY PARTS LIST ABOVE
FOR STRINGER APPLICATIONS.
SHOWN ON LOWER PAGE AREA.

OPSTOCK, INC. 5228 WEST RIVER DR, NE COMSTOCK PARK, MI 49321 P: 616 241 6720 F: 616 241 6730			
SIZE	FSCM NO.	DWG NO.	REV
		APPLICATION GUIDE	
SCALE: NTS.		DWG 39C-1	

"APPLICATION GUIDE" (INFINITY 55 SERIES / 53 SERIES)



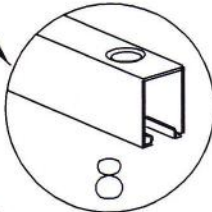
Infinity Parts List (choose 1 or 2)

- * ① Infinity Grate (P/N: ISG55-15)
Leveling Leg (P/N: CLX)
- ② Infinity Grate (P/N: ISG53-15)
Leveling Leg (P/N: CLX)

MFR. Tate Heavy Duty

Stringer dims, 23' L
13/16" W
1.1/4" H
Hole Ctrs, 22"

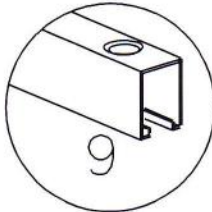
Stringer Type: Bolt on.
Heavy Duty Floor. Tate #590956 Bolt on.



MFR. Maxcess BG2

Stringer dims, 22.7/8" L
13/16" W
1.1/4" H

Hole Ctrs, 22"
Stringer Type: Bolt on.

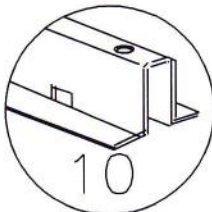


*

MFR. C-Tec/IAR/Haworth

Stringer dims, 22.7/8" L
1.3/16" W
1.1/16" H

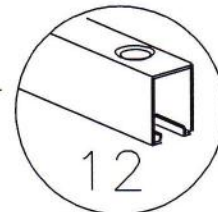
Hole Ctrs, 22"
Stringer Type: Bolt on.



MFR. Custom

Stringer dims, 23.3/16 L
13/16" W
1.1/4" H

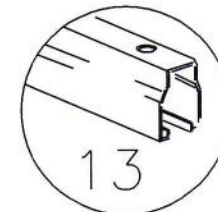
Hole Ctrs, 22.3/8"
Stringer Type: Bolt on.



MFR. Severn

Stringer dims, 23.1/16" L
13/16" W
1.1/16" H

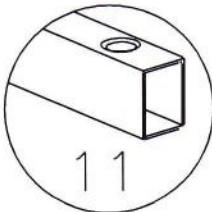
Hole Ctrs, 20.1/2"
Stringer Type: Cuff-Link.



MFR. Tate/S-707

Stringer dims, 22.13/16" L
5/8" W
1" H

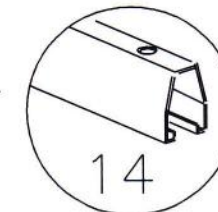
Hole Ctrs, 22.3/8"
Stringer Type: Drop on.



MFR. Lisky Mark 40

Stringer dims, 22.7/8" L
7/8" W
1.1/8" H

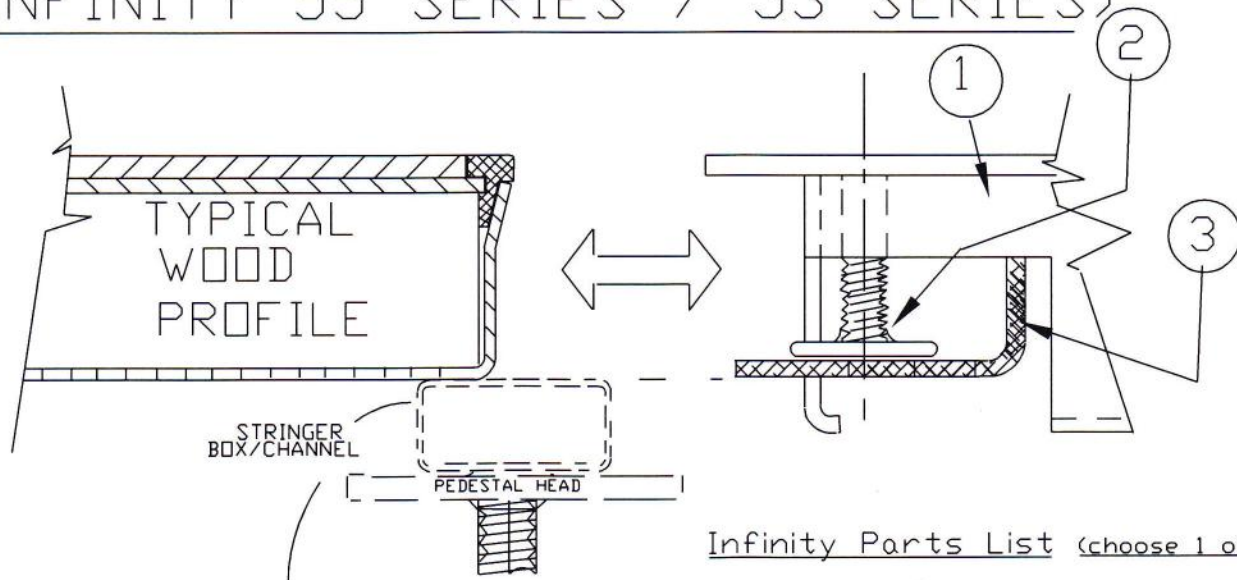
Hole Ctrs, 22"
Stringer Type: Bolt on.



* Note—"Tight Fit" Probability (Option 1)

USE INFINITY PARTS LIST ABOVE FOR STRINGER APPLICATIONS.
SHOWN ON LOWER PAGE AREA.

"APPLICATION GUIDE" (INFINITY 55 SERIES / 53 SERIES)

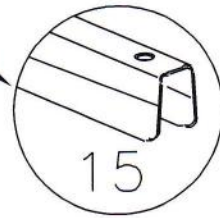


Infinity Parts List (choose 1 or 2)

- ① Infinity Grate (P/N: ISG55-15)
Leveling Leg (P/N: CLL)
"Z" Plate (P/N: ZPW)
- ② Infinity Grate (P/N: ISG53-15)
Leveling Leg (P/N: CLL)
"Z" Plate (P/N: ZPW-C)

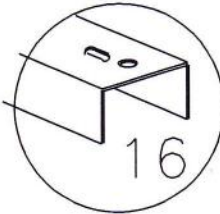
MFR: ASM/MAXCESS

Stringer dims, 22.7/8" L
7/8" W
1.1/8" H
Hole Ctrs, 22"
Stringer Type: Snap on.



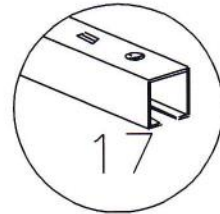
MFR: Computer Environments

Stringer dims, 21.7/8" L
1.1/8" W
3/4" H
Hole Ctrs, 21.1/2"
Stringer Type: Bolt on.



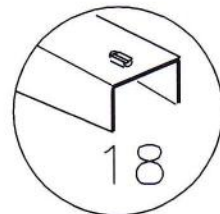
MFR: Tate/ Wood Core.

Stringer dims, 22.13/16" L
1" W
3/4" H
Hole Ctrs, 21"
Stringer Type: Bolt on.



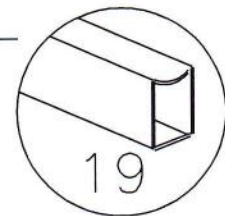
Unknown

MFR: ASM Modular Systems.
Stringer dims, 22.5/16" L
1.1/8" W
5/8" H
Hole Ctrs, 21.1/2"
Stringer Type: Bolt on.



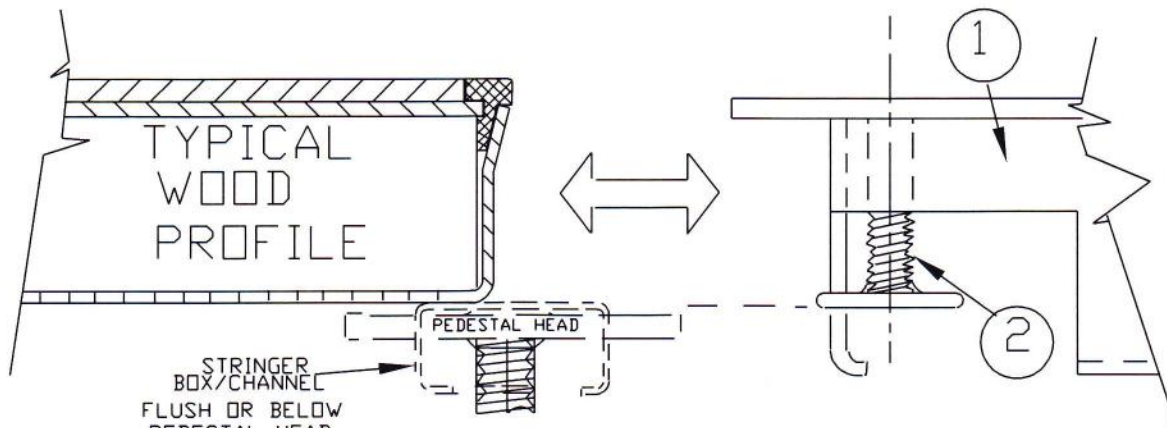
MFR: Camino Wood Core.

Stringer dims, 22.7/8" L
1" W
1.1/4" H
Hole Ctrs, 20.1/2"
Stringer Type: Bolt on.
Canadian design Old Style.



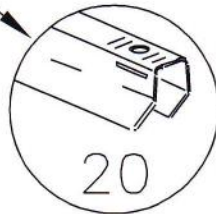
USE INFINITY PARTS LIST ABOVE FOR STRINGER APPLICATIONS.
SHOWN ON LOWER PAGE AREA.

"APPLICATION GUIDE" (INFINITY 55 SERIES / 53 SERIES)



Infinity Parts List (choose 1 or 2)

MFR: C-Tec PSL-1
 Stringer dims, 22.5/8" L
 5/8" W
 1" H
 Hole Ctrs, 21.7/8"
 Stringer Type: Twist-on/Bolted.



- ① Infinity Grate (P/N: ISG55-15)
Leveling Leg (P/N: CLL)
- ② Infinity Grate (P/N: ISG53-15)
Leveling Leg (P/N: CLL)

MFR: Custom.
 Stringer dims, 23.1/4" L
 1" W
 1" H
 Hole Ctrs, 20.3/4"
 Stringer Type: Bolt on.

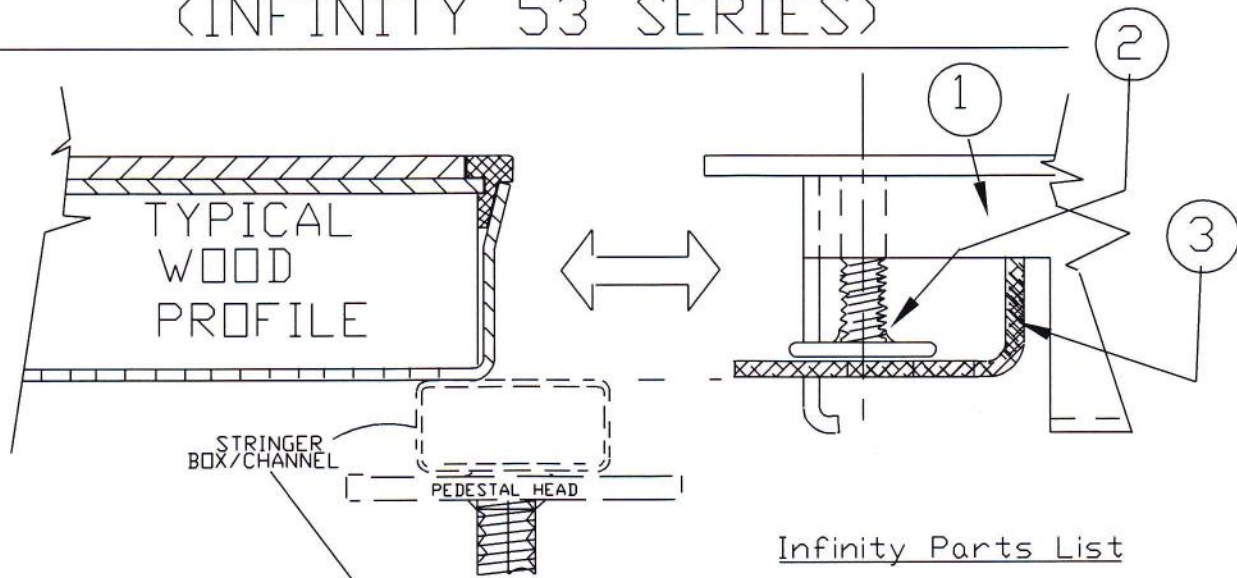


MFR: Westinghouse
 Stringer dims, 22.7/8" L
 1" W
 9/16" H
 Hole Ctrs, 22.5/16"
 Stringer Type: Bolt on.
 Wood Core



USE INFINITY PARTS LIST ABOVE FOR STRINGER APPLICATIONS.
 SHOWN ON LOWER PAGE AREA.

"APPLICATION GUIDE" (INFINITY 53 SERIES)

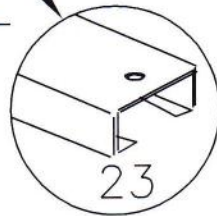


Infinity Parts List

- ① Infinity Grate (P/N: ISG53-15)
Leveling Leg (P/N: CLL)
"Z" Plate (P/N: ZPW-C)
- ② Infinity Grate (ISG55-15)
NO APPLICATION
- ③

MFR. Computer Environments

Stringer dims, 22.5/16" L
1.1/2" W
13/16" H
Hole Ctrs, 21.1/4"
Stringer Type: Bolt on.



MFR. Donn/Low Profile

Stringer dims, 22.15/16" L
1.1/4" W
5/8" H
Hole Ctrs, 21.7/16"
Stringer Type: Bolt on.



MFR: Waco 101

Stringer dims, 21" L
1.1/4" W
13/16" H
Hole Ctrs, N/A.
Stringer Type: Snap on.



MFR: MaxcessWC5000

Stringer dims, 22.1/8" L
1.5/8" W
13/16" H
Hole Ctrs, 21.1/8"
Stringer Type: Bolt on.



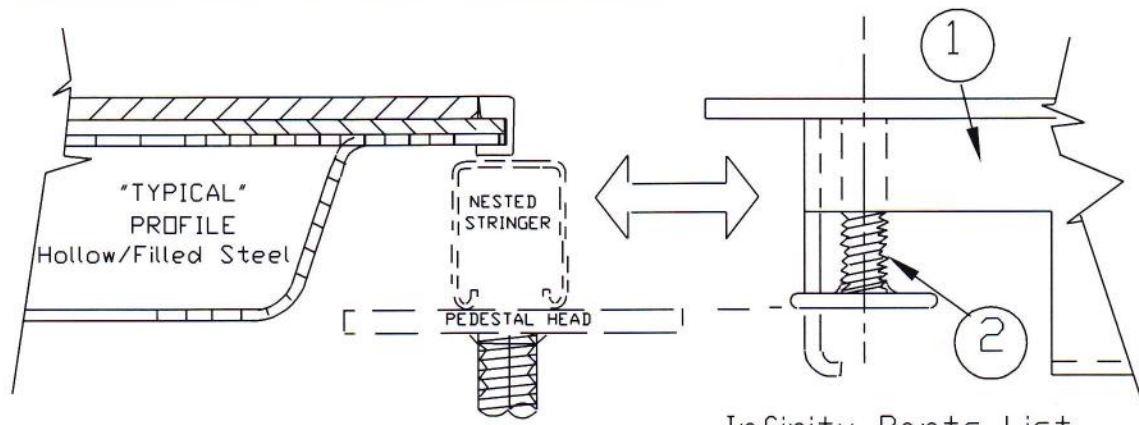
MFR. FSF Floors

Stringer dims, 22.5/16" L
1.1/4" W
7/8" H
Hole Ctrs, 21.1/4"
Stringer Type: Bolt on.



USE INFINITY PARTS LIST ABOVE FOR STRINGER APPLICATIONS.
SHOWN ON LOWER PAGE AREA.

"APPLICATION GUIDE" (INFINITY 53 SERIES)



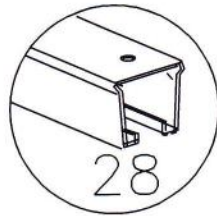
Infinity Parts List

- ① Infinity Grate (P/N: ISG53-15)
Leveling Leg (P/N: CLX)
- ② Infinity Grate (P/N: ISG55-15)
LIMITED/ NO APPLICATION

MFR. Tate/Mark 20/30

Stringer dims, 22.7/8" L
(1.7/16" w/pad.) 1" W
1.1/4" H

Hole Ctrs, 22"
Stringer Type: Bolt on.



28

MFR. C-Tec/IAR/Haworth.

Stringer dims, 22.7/8" L
1.3/16" W
1.1/16" H

Hole Ctrs, 22"
Stringer Type: Bolt on.



29

USE INFINITY PARTS LIST ABOVE FOR STRINGER APPLICATIONS.
SHOWN ON LOWER PAGE AREA.

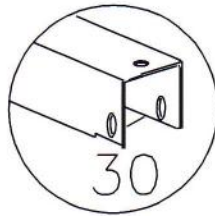
"APPLICATION GUIDE"

(INFINITY AIR GRATE)

INFINITY PARTS LIST (VARIES) CONSULT FACTORY

MFR: Unknown
 Stringer dims, 22.1/2" L
 1.1/2" W
 1.3/4" H

Hole Ctrs, 21.1/2"
 Stringer Type: Bolt on.
 Heavy Duty Floor.

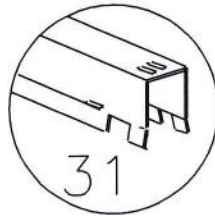


30

MFR: TateModel 801

Stringer dims, 22.15/16" L
 3/4" W
 1" H

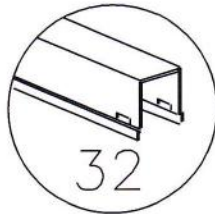
Hole Ctrs, N/A.
 Stringer Type: Snap on.



31

MFR: Donn

Stringer dims, 22.3/4" L
 1" W
 1.13/16" H
 Hole Ctrs, N/A
 Stringer Type: Bolt on.



32

MFR: Unknown Custom.

Stringer dims, 22.11/16" L
 13/16" W
 1.1/4" H

Hole Ctrs, 21.9/32"
 Stringer Type: Bolt on.

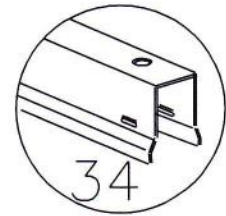


33

MFR: Donn/Snap on

Stringer dims, 22.7/8" L
 3/4" W
 1.1/4" H

Hole Ctrs, N/A
 Stringer Type: Snap on.

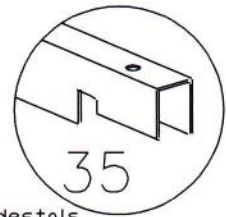


34

MFR: Custom.

Stringer dims, 22.11/16" L
 1/2" W
 1" H

Hole Ctrs, 21"
 Stringer Type: Bolt on.
 Use with C-Tec snap on pedestals
 on stringerless applications

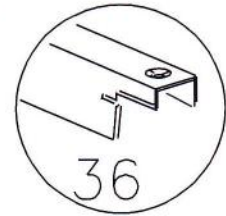


35

MFR: Unknown Custom.

Stringer dims, 22.7/16" L
 5/8" W
 1" H

Hole Ctrs, 21.11/16"
 Stringer Type: Bolt on.



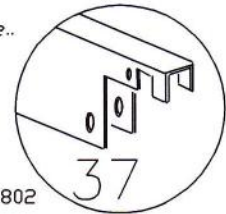
36

MFR: Custom, Tate 802 for Europe..

Stringer dims, 22.7/16" L
 5/8" W
 2" H

Hole Ctrs, 21.5/8"
 Stringer Type: Bolt on.

European version of the series 802



37